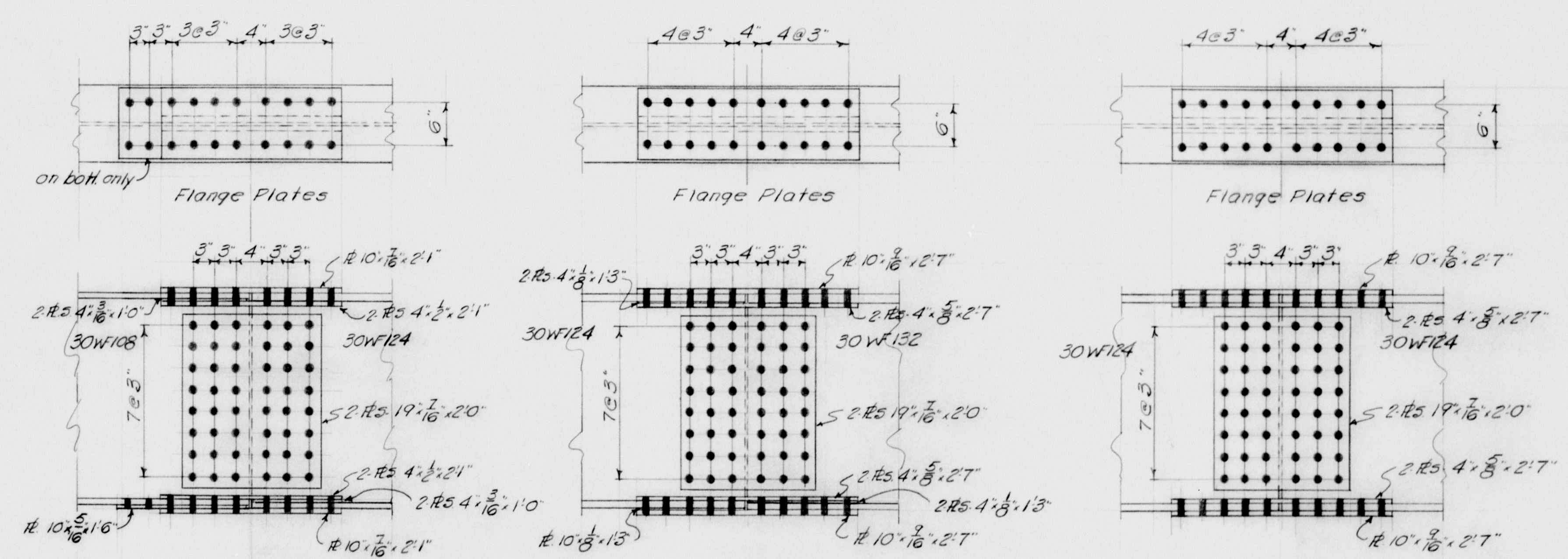


TYPICAL DIAPHRAGM DETAILS



STRINGER SPLICE DETAILS

NOTE:-
All splices to be made with 3/8" high strength bolts in 1/8" holes

NOTES:

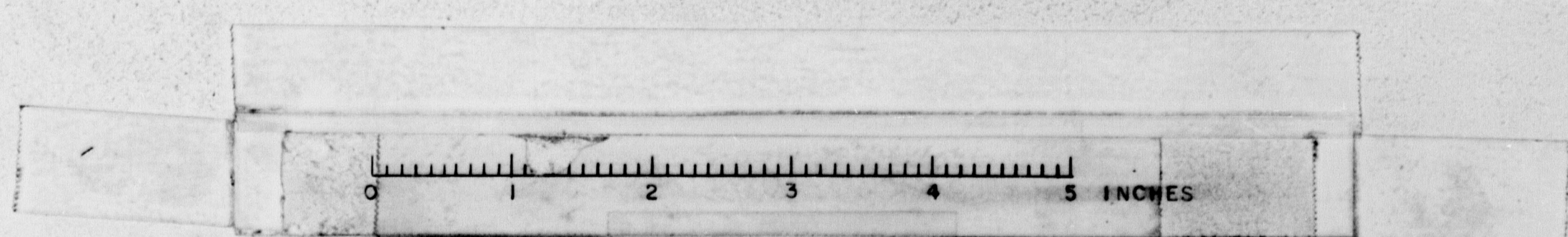
FRAMING PLAN	
Bancroft & Martin Rolling Mills Company South Portland 7, Maine	
DEPOT ROAD OVER INTERSTATE FALMOUTH, ME.	
CUSTOMER	E.C. SNODGRASS, INC.
DESIGNER	M.S.H.C.
ORDER NO.	DWG. NO. 8-411-E1

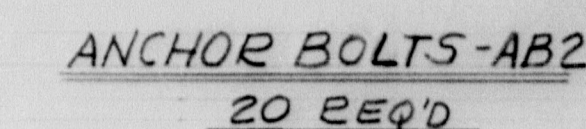
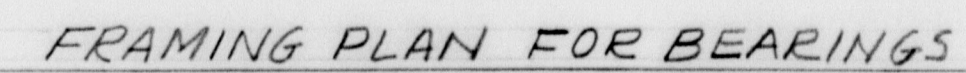
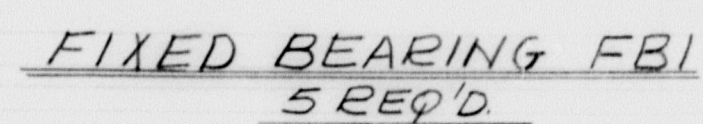
APP 1-23-59

DRAWN	121558	PLF
REVISION	1-2159	PLF
REVISION		
REVISION		

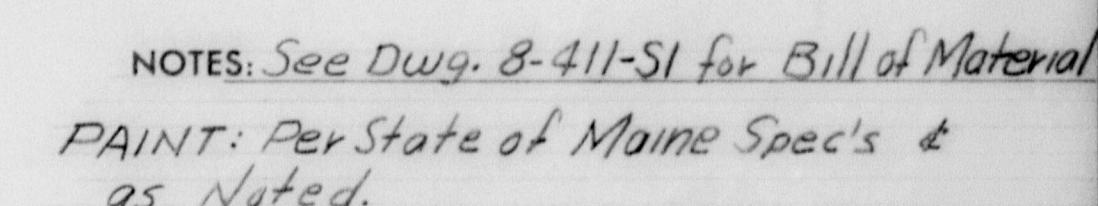
chkd

73-65





- 1-Top & Sides of top plate & underside of bottom plate to be free of paint on all bearings.
- 2-Bearings to be Shopwelded to Stringers
- 3-Coat finished surfaces ASA-125 with white lead & talow.
- 4-Weld 1/2" cont. fillet except as noted.



SCUPPER DETAIL SDI
8 REQ'D.

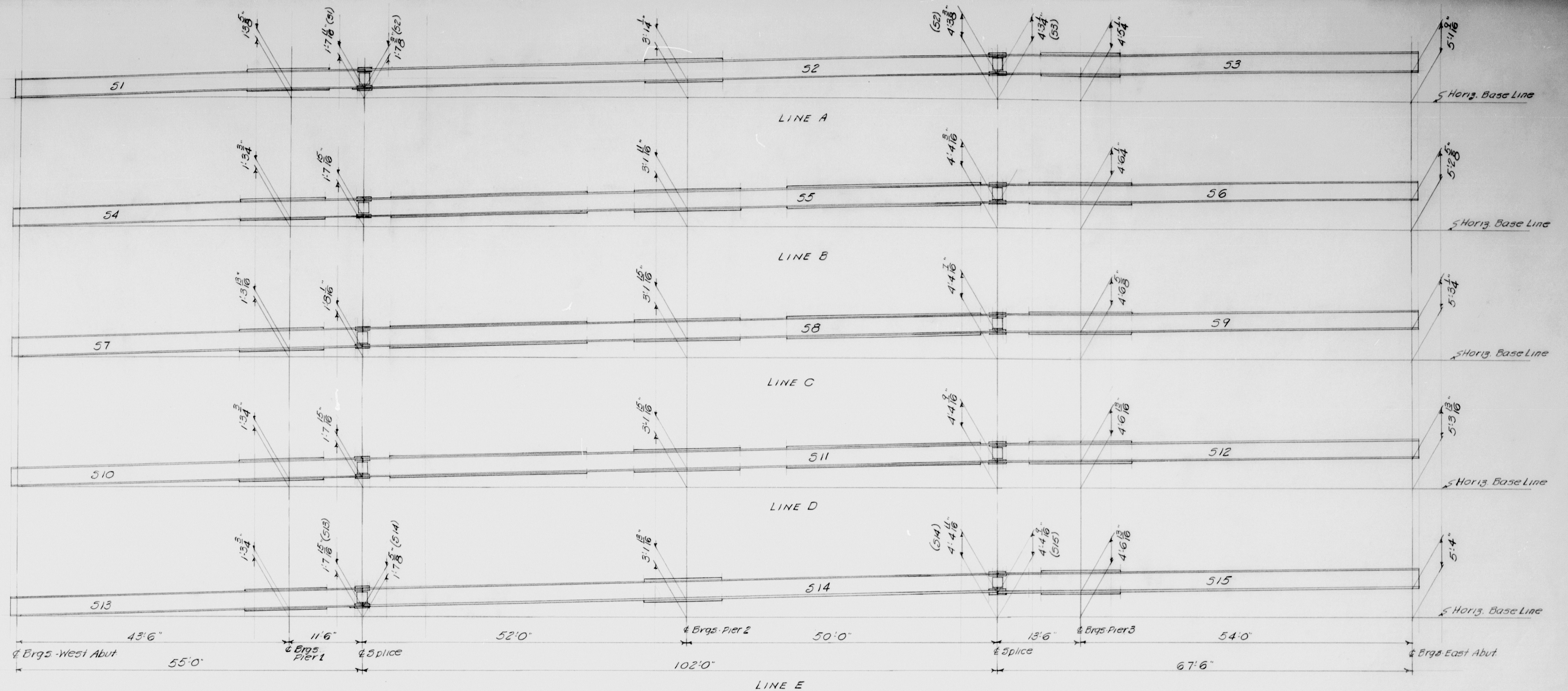
BEARING & SCUPPER DETAILS

Barcraft & Martin Rolling Mills Company
South Portland 7, Maine

DEPOT ROAD OVER INTERSTATE
FALMOUTH, MAINE

CUSTOMER ELLIS C. SNODGEASS, INC.
DESIGNER MAINE S.H.C. BRIDGE DIV.

ORDER NO. VEREAL DWG. NO. 8-411-52



SHOP ASSEMBLY PROFILES

NOTES:
Horizontal Base Line is taken from
of Brgs. West Abut.
No camber in beams, any natural camber
to be up.

APR 123-59

SHOP ASSEMBLY PROFILES	
Bancroft & Martin Rolling Mills Company	
South Portland 7, Maine	
DEPOT ROAD OVER INTERSTATE FALMOUTH, ME.	
CUSTOMER	E. C. SNODGRASS
DESIGNER	M. S. H. C.
ORDER NO.	DWG. NO. 3-411-53

DRAWN	1215-58	PLF
REVISION	12159	PLF
REVISION		
REVISION		

0 1 2 3 4 5 INCHES

73-68